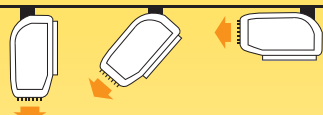


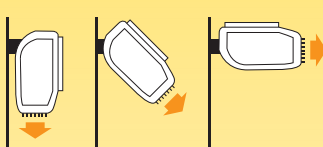
## 3Kw Screen Heater



### Ceiling installation



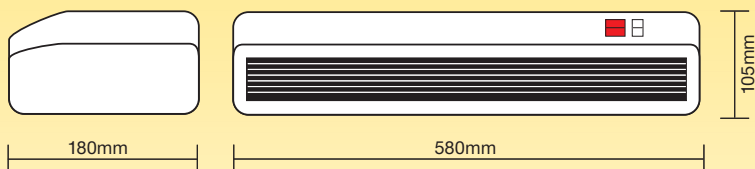
### Wall installation



- Steel construction
- Powder coated paint
- 1.5Kw or 3Kw output
- Quiet running
- Pre-wired with 1.2m of cable
- IP20 Rated

**NEW PRODUCT**

SH3WH



## Plinth Fan Heater

- Three heat settings – 800w, 1600w and 2400kw
- Thermostatically controlled
- Thermal cut-out
- Three fascias included – Brown, White and Stainless Steel
- Four rubber feet – no vibration
- Easy to install
- Pre-wired with 1.5m of cable
- Illuminated switches
- IP20

PFH2400



**NEW PRODUCT**

