



## PVC Mini Trunking

### 3m lengths

MT0	16 x 10 mm
MT1	16 x 16 mm
MT2	16 x 25 mm
MT3	16 x 40 mm
MT4	25 x 40 mm
MT5	40 x 40 mm



## Flat Angle

MT1	16 x 16 mm
MT2	16 x 25 mm
MT3	16 x 40 mm
MT4	25 x 40 mm



## Internal Angle

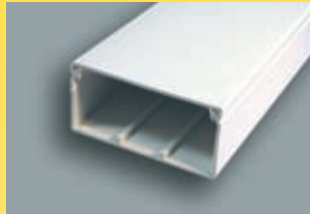
MT1	16 x 16 mm
MT2	16 x 25 mm
MT3	16 x 40 mm
MT4	25 x 40 mm



## PVC Capping

### 2m lengths

12 mm
25 mm
38 mm



## PVC Maxi Trunking

### 3m lengths

50 x 50 mm
50 x 100 mm
100 x 100 mm
150 x 150 mm



## Flat Tee

MT1	16 x 16 mm
MT2	16 x 25 mm
MT3	16 x 40 mm
MT4	25 x 40 mm



## External Angle

MT1	16 x 16 mm
MT2	16 x 25 mm
MT3	16 x 40 mm
MT4	25 x 40 mm

## Capping Nails



Ideal for fixing PVC or steel channelling, the capping nail comes complete with a washer that, during installation, slides along the stem of the nail to give an enlarged head and a positive fixing.

12cap25	25mm
12cap35	35mm



## Self Adhesive PVC Mini Trunking

### 3m lengths

MT0SA	16 x 10 mm
MT1SA	16 x 16 mm
MT2SA	16 x 25 mm
MT3SA	16 x 40 mm
MT4SA	25 x 40 mm



## Couplers

MT1	16 x 16 mm
MT2	16 x 25 mm
MT3	16 x 40 mm
MT4	25 x 40 mm



## Adaptors

MT1	16 x 16 mm
MT2	16 x 25 mm
MT3	16 x 40 mm
MT4	25 x 40 mm



## End Cap

MT1	16 x 16 mm
MT2	16 x 25 mm
MT3	16 x 40 mm
MT4	25 x 40 mm



## PVC Conduit

White or black in 3m lengths

### Light Gauge

20 mm  
25 mm

### Heavy Gauge

20 mm  
25 mm



## Terminal Box

White or black

20 mm  
25 mm



## Angle box

White or black

20 mm  
25 mm



## Tee Box

White or black

20 mm  
25 mm



## Through Box

White or black

20 mm  
25 mm



## Adaptors

White or black

### Male

20 mm  
25 mm

### Female

20 mm  
25 mm



## U Box

White or black

20 mm  
25 mm



## Inspection Tee

White or black

20 mm  
25 mm



## Inspection Bend

White or black

20 mm  
25 mm



## Inspection Elbow

White or black

20 mm  
25 mm



## Compression Glands & Lock Rings

White or black

### Glands

20 mm  
25 mm

### Lock rings

20 mm  
25 mm



## Couplers

White or black

20 mm  
25 mm



## Saddles

White or black

20 mm  
25 mm



## Box Lid & Screws

White or black

20 mm  
M4 x 12 mm



## PVC Surface Box

White

1 Gang 25mm  
2 Gang 25mm

# FLEXICON

FLEXIBLE CONDUIT & ACCESSORIES



the power in cable management



## Flexible conduit and accessories

Ask at Trade Counter for a colour catalogue detailing Flexicon's full extensive range

### Contractor Pack

Each pack consists of:

- 10m of 20mm black polypropylene IP40 flexible conduit, 10 fittings and 10 locknuts

FPPCP21B

## PVC Skirting & Dado Trunking

Skirting and Dado-trunking systems have been developed to provide a practical solution for the supply of power, data and telecommunication cabling in both new and refurbished buildings.

Available in three standard designs, Skirting, Chamfered and Square, with a full range of accessories available.

### Square Dado Trunking



**SLQ**  
3m length

### Skirting Trunking



**SLS**  
3m length

### Chamfered Dado Trunking



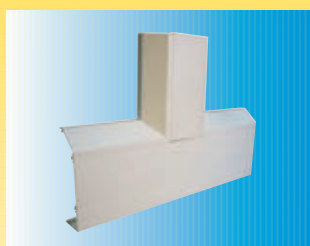
**SLC**  
3m length

### Flat Angles



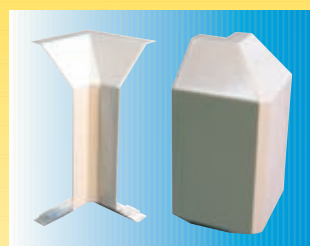
QEW Square  
SFW Skirting  
CFW Chamfered  
Fabricated

### Flat Tees



QFT Square  
SFT Skirting  
CFT Chamfered  
Fabricated

### Internal & External Angles



QIE Square INT  
QAE Square EXT  
SIE Skirting INT  
SAE Skirting EXT  
CIE Chamfered INT  
CAE Chamfered EXT

### Stop Ends



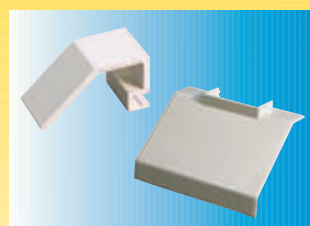
QE Square  
SE Skirting  
CE Chamfered

### Outlet Boxes



SLB1 1 Gang  
SLB2 2 Gang

### Accessories



**Cable Retainer**  
QH Square  
CH Skirting & Cham  
**Mini Trunking Adaptor**  
AS Square  
AC Skirting & Cham

We're happy to quote for bulk quantities



## Steel Conduit

3.75m lengths

- 20 mm B/E
- 20 mm Galvanised
- 25 mm B/E
- 25 mm Galvanised



## Terminal Box

- 20 mm B/E
- 20 mm Galvanised
- 25 mm B/E
- 25 mm Galvanised



## Through Box

- 20 mm B/E
- 20 mm Galvanised
- 25 mm B/E
- 25 mm Galvanised



## Tee Box

- 20 mm B/E
- 20 mm Galvanised
- 25 mm B/E
- 25 mm Galvanised



## Angle Box

- 20 mm B/E
- 20 mm Galvanised
- 25 mm B/E
- 25 mm Galvanised



## Trouser Box

- 20 mm B/E
- 20 mm Galvanised
- 25 mm B/E
- 25 mm Galvanised



## Spacer Bar Saddles

- 20 mm B/E
- 20 mm Galvanised
- 25 mm B/E
- 25 mm Galvanised



## Couplers

- 20 mm B/E
- 20 mm Galvanised
- 25 mm B/E
- 25 mm Galvanised



## Inspection Bends & Elbows

### Bends

- 20 mm B/E
- 20 mm Galvanised
- 25 mm B/E
- 25 mm Galvanised

### Elbows

- 20 mm B/E
- 20 mm Galvanised
- 25 mm B/E
- 25 mm Galvanised



## Dome Plates

- 20 mm Galvanised



## Box Lid & Gaskets

- 20 mm B/E
- 20 mm Galvanised
- 20 mm Rubber Cas.



## Male Brass Bush

- 20 mm Brass
- 25 mm Brass



## Circular Box with Cable Glands



**Junction box with plain press on lid IP44**

- GW 44001**  
65mm x 35mm depth
- GW 44002**  
80mm x 40mm depth

## Transparent Cover



**Boxes with smooth walls and transparent lid IP56**

- GW 44426**  
150 x 110 x 70mm
- GW 44428**  
240 x 190 x 90mm
- GW 44430**  
380 x 300 x 120mm

## Moulded Enclosures Screw Lids



**Moulded enclosures with smooth side walls and screw on lids IP55**

- GW 44204**  
100 x 100 x 50mm
- GW 44205**  
120 x 80 x 50mm
- GW 44206**  
150 x 110 x 70mm
- GW 44208**  
240 x 190 x 90mm
- GW 44209**  
300 x 220 x 120mm
- GW 44210**  
380 x 300 x 120mm
- GW 44211**  
460 x 380 x 120mm

## Moulded Enclosures Deep Lids



**Moulded enclosures with deep lids IP56**

- GW 44214**  
100 x 100 x 120mm
- GW 44216**  
150 x 110 x 140mm
- GW 44217**  
190 x 140 x 140mm
- GW 44218**  
240 x 190 x 160mm

## Metal Mounting Plates

**Galvanised metal mounting plates for use with moulded enclosures.**

- GW 44615** 190 x 140mm
- GW 44616** 240 x 190mm
- GW 44617** 300 x 220mm
- GW 44618** 380 x 300mm

# GREENBROOK ELECTRICAL PLC

## Metal Boxes



- 332BK** 3x3x2 Black/KO
- 332BP** 3x3x2 Black/Plain
- 332GK** 3x3x2 Galv/KO
- 332GP** 3x3x2 Galv/Plain
- 442BK** 4x4x2 Black/KO
- 442BP** 4x4x2 Black/Plain
- 442GK** 4x4x2 Galv/KO
- 442GP** 4x4x2 Galv/Plain

## Metal Boxes



- 662BK** 6x6x2 Black/KO
- 662BP** 6x6x2 Black/Plain
- 662GK** 6x6x2 Galv/KO
- 662GP** 6x6x2 Galv/Plain
- 942BK** 9x4x2 Black/KO
- 942BP** 9x4x2 Black/Plain
- 942GK** 9x4x2 Galv/KO
- 942GP** 9x4x2 Galv/Plain

## Metal Boxes



- 996BK** 9x9x6 Black/KO
- 996BP** 9x9x6 Black/Plain
- 996GK** 9x9x6 Galv/KO
- 996GP** 9x9x6 Galv/Plain
- 1212BK** 12x12x4 Black/KO
- 1212BP** 12x12x4 Black/Plain
- 1212GK** 12x12x4 Galv/KO
- 1212GP** 12x12x4 Galv/Plain



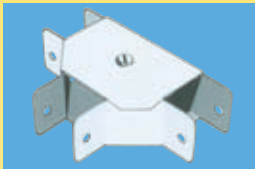
## Metal Trunking



### Standard Trunking

TK22	50 x 50
TK33	75 x 75
TK44	100 x 100
TK66	150 x 150

Supplied in 3m lengths c/w lid and coupler



### Gusset Tee Inside Lid

GIT22	50 x 50
GIT33	75 x 75
GIT44	100 x 100
GIT66	150 x 150



### Gusset Bend Inside Lid

GIB22	50 x 50
GIB33	75 x 75
GIB44	100 x 100
GIB66	150 x 150

### Gusset Tee Outside Lid

GOT22	50 x 50
GOT33	75 x 75
GOT44	100 x 100
GOT66	150 x 150

### Gusset Bend Outside Lid

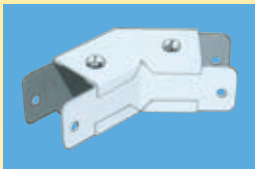
GOT22	50 x 50
GOT33	75 x 75
GOT44	100 x 100
GOT66	150 x 150

### Gusset Tee Top Lid

GTT22	50 x 50
GTT33	75 x 75
GTT44	100 x 100
GTT66	150 x 150

### Gusset Bend Top Lid

GTB22	50 x 50
GTB33	75 x 75
GTB44	100 x 100
GTB66	150 x 150



### 45 Degree Elbow Outside Lid

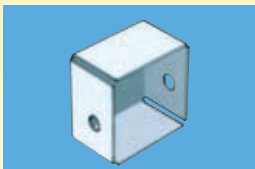
OE22	50 x 50
OE33	75 x 75
OE44	100 x 100
OE66	150 x 150

### 45 Degree Elbow Inside Lid

IE22	50 x 50
IE33	75 x 75
IE44	100 x 100
IE66	150 x 150

### 45 Degree Elbow Top Lid

TE22	50 x 50
TE33	75 x 75
TE44	100 x 100
TE66	150 x 150



### End Cap

BE22	50 x 50
BE33	75 x 75
BE44	100 x 100
BE66	150 x 150

## Cable Tray



### Light Duty

LD50/T	50mm
LD75/T	75mm
LD100/T	100mm

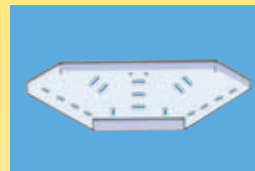
Supplied in 3m lengths



### Medium Duty

MR100/T	100mm
MR150/T	150mm
MR225/T	225mm

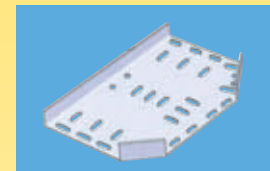
Supplied in 3m lengths



### Light Duty

#### Flat 90 degree bend

LD50FB	50mm
LD75FB	75mm
LD100FB	100mm



### Light Duty

#### Equal Tee

LD50ET	50mm
LD75ET	75mm
LD100ET	100mm

### Medium Duty

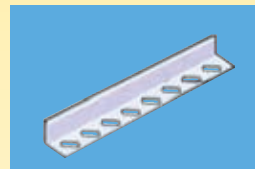
#### Flat 90 degree bend

MR100FB	100mm
MR150FB	150mm
MR225FB	225mm

### Medium Duty

#### Equal Tee

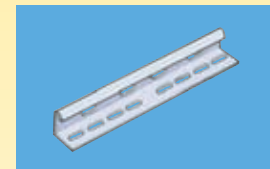
MR100ET	100mm
MR150ET	150mm
MR225ET	225mm



### Light Duty

#### Straight Coupler

LD/SC
Per pair



### Medium Duty

#### Straight Coupler

MR/SC
Per pair

Full range of Lighting Trunking available please ask for details.